

- Baseline TWIST Milky LED is a fully encapsulated, both Vertical & Horizontal bending flexible linear LED.
- Available in Pro or Standard Version.
- Material: Silicone
- Bin Step: Monochromatic White LEDs Silicone: 2SDCM
- L70B10>50000Hrs
- Available in IP67 protection rate.
- CRI>90 for 2700/3000/3500/4000K
- Possibility to create straight or curved lines.
- Can be used both indoor and outdoor.
- Dot free lighting effect.
- IK 08 Protection.
- Can ideally be used with surface aluminium profile.

Max connection length:

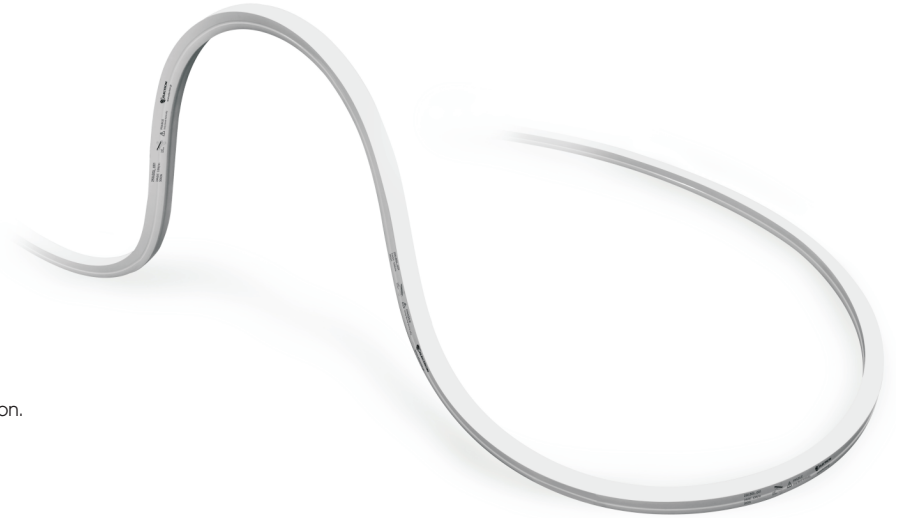
- Monochromatic: 5 meters single supply

- ✓ UV Resistant
- ✓ Chemical Resistant

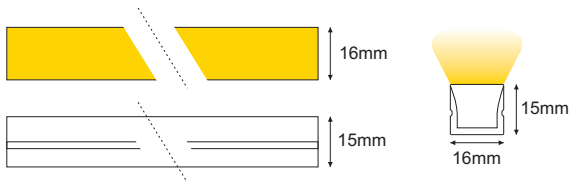
- > Please verify the contents of the packages.
- > Please read the instructions entirely before starting installation.
- > Be sure power is turned off before installing the system.

Warnings: risk of product damage

- > BASELINE TWIST can be twisted within 200mm bending diameter.
- > BASELINE TWIST shall not be bent sharply as it may cause product damage.
- > During the installation, the BASELINE TWIST can not be: Dropped, Bent at a 90° angle or bent at all, Sagging/Hanging down



Dimensions



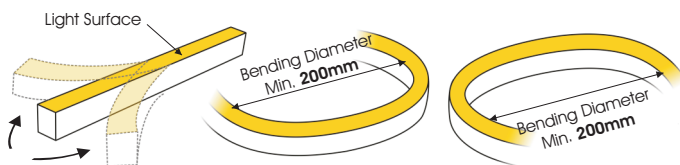
Cutting points: every 50mm

Please confirm with the ✂ sign on the rear side of the modules

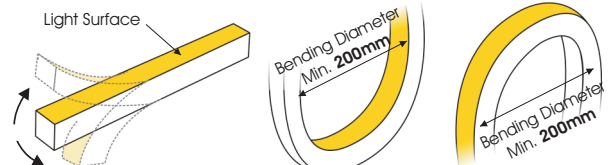
Note: Cutting the product without the appropriate endcap and tools by a non-authorized person will result to a loss of the IP protection, causing water leakage and failure.

Bending

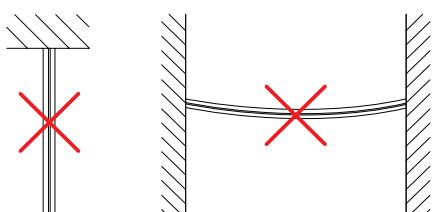
Horizontal bending



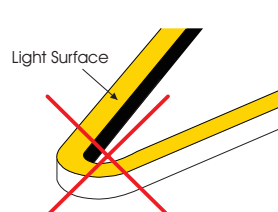
Vertical bending



Do not hang

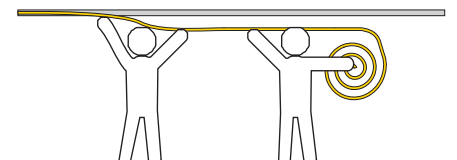


Do not Bend too tight



Installation note

BASELINE TWIST must be installed with two people. One to press the luminaire into the profile and the other to hold the reel and unroll it while keeping the BASELINE TWIST flex body straight.

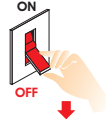


Installation

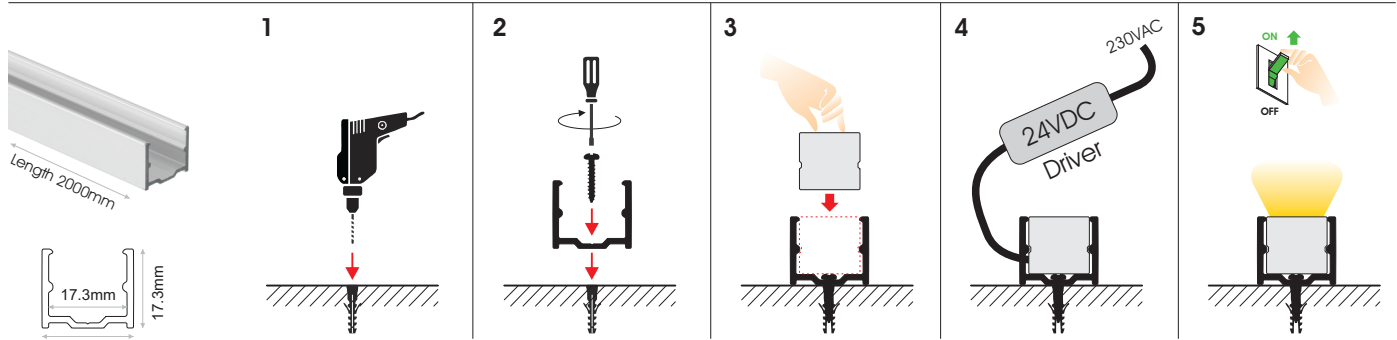


Attention

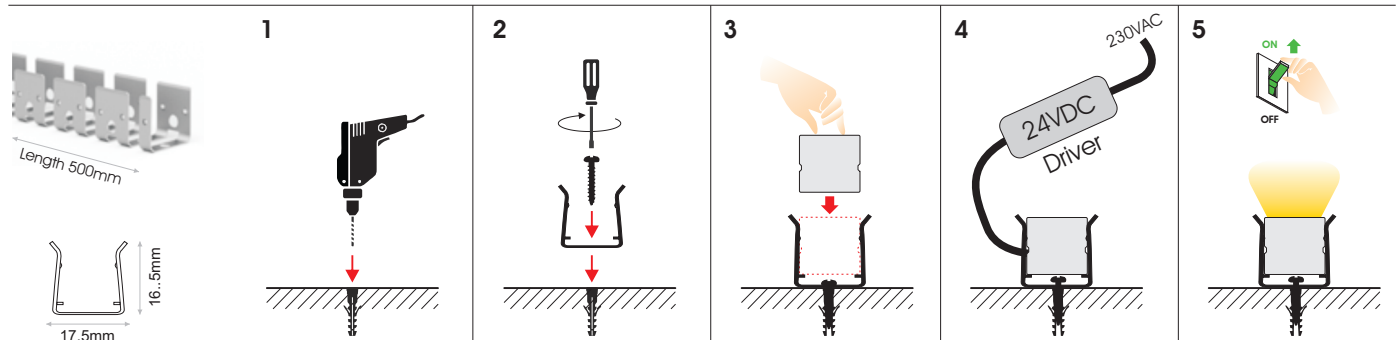
Before any maintenance switch off the main power.



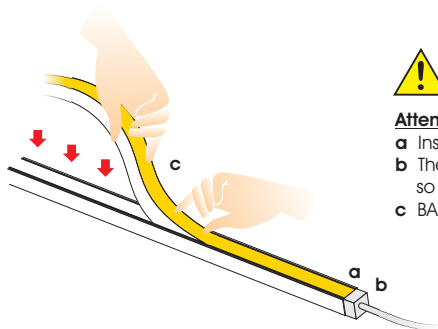
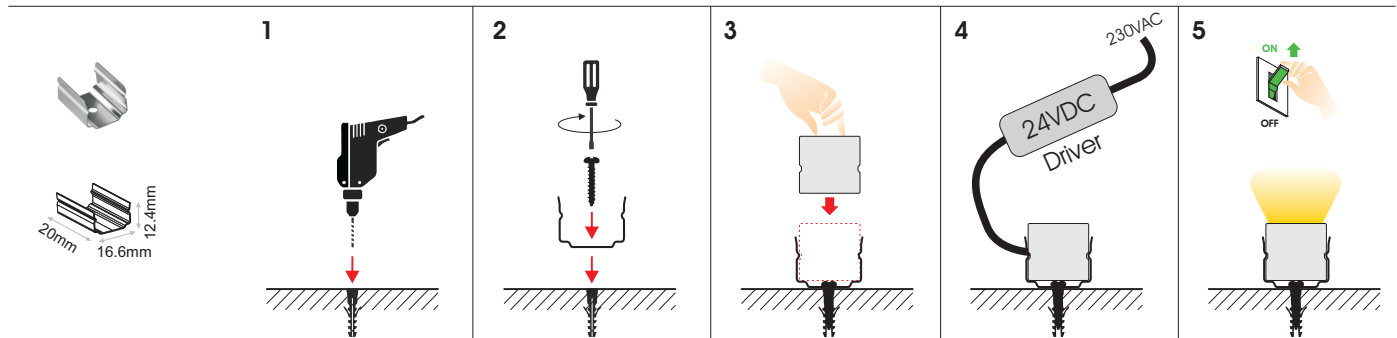
BASELINE TWIST & BASELINE V Aluminium Profile Anodized (PRF.421)



BASELINE Bendable Stainless Steel Profile (PRF.190)



Mounting Clips stainless steel 316 for BASELINE TWIST & BASELINE V (PRH.088)



Attention

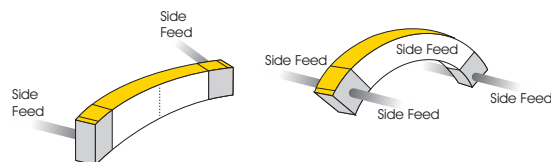
- a Insert BASELINE into mounted profile starting from power connector end.
- b The End Cap and Power Feed Connector do not fit within the profile so cut the Mounting profile so that connectors and End Caps will overhang outside the ends of the profile.
- c BASELINE should be pressed into the profile carefully and gradually, without excessive bending or damage will result.

Connection IP67

Side Feed



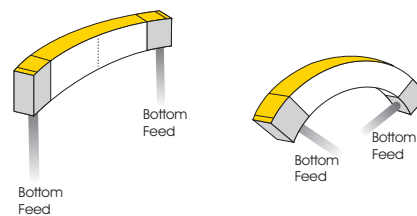
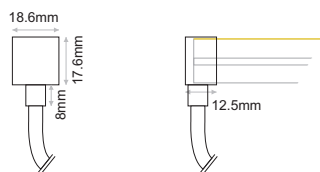
Code for Single Colour	Description	Length
BSL.301	Side Feed BASELINE IP67	L=0.3m



Bottom Feed



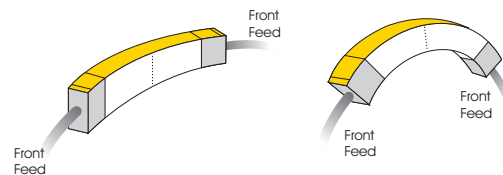
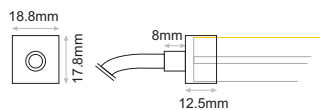
Code for Single Colour	Description	Length
BSL.302	Bottom Feed BASELINE IP67	L=0.3m



Front Feed



Code for Single Colour	Description	Length
BSL.300	Front Feed BASELINE IP67	L=0.3m



End Cap



Code for Single Colour	Description
BSL.303	End Cap BASELINE IP67



How to cut and assemble BASELINE



Attention

Before any maintenance switch off the main power.

